

# Dal segno alla costruzione La genesi dell'opera architettonica



## SCULPTURES

**SANTIAGO CALATRAVA: SCULPTURE INTO ARCHITECTURE**  
The Metropolitan Museum of Art  
October 18, 2005–March 5, 2006



SANTIAGO CALATRAVA: SCULPTURE INTO ARCHITECTURE  
The Metropolitan Museum of Art, October 18, 2005–March 5, 2006



**SANTIAGO CALATRAVA: SCULPTURE INTO ARCHITECTURE**  
**The Metropolitan Museum of Art, October 18, 2005–March 5, 2006**

**Shadow Machine,**

2005

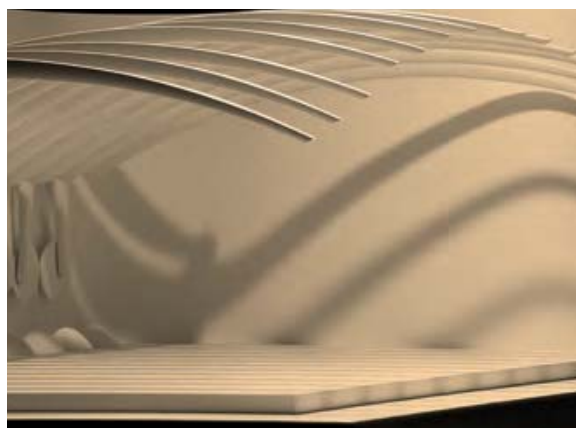
Fiberglass, aluminum,  
plastic-coated steel  
and plaster

14 ft 11 <sup>1</sup>/<sub>8</sub> in x 63 <sup>7</sup>/<sub>8</sub> in x

82 <sup>5</sup>/<sub>8</sub> in

(455 x 162.42 x 210 cm)

Shown here, a version from 1989;  
photograph by Paolo Rosselli



**Running Torso, 2005**

White marble, chrome-  
plated steel, wire

55 <sup>1</sup>/<sub>8</sub> x 9 <sup>7</sup>/<sub>8</sub> in

(140 x 25 cm)

Shown here, original version  
from 1985; photograph by  
Giorgio von Arb and Andreas  
Camenzind



**Alamillo Bridge,**

Seville, Spain, 1987–1992

Model

Photograph of the completed  
project by Paolo Rosselli



**SANTIAGO CALATRAVA: SCULPTURE INTO ARCHITECTURE**  
**The Metropolitan Museum of Art, October 18, 2005–March 5, 2006**

**Head XIB, 1994**

Ebony, chrome-plated  
steel, wire

23<sup>5</sup>/<sub>8</sub> x 7<sup>1</sup>/<sub>8</sub> x 16<sup>1</sup>/<sub>2</sub> in  
(60 x 18 x 42 cm)

Photograph by Giorgio von Arb  
and Andreas Camenzind



**Bridge, 1994**

Black cienite granite,  
gold-plated brass, wire

68<sup>7</sup>/<sub>8</sub> x 11<sup>3</sup>/<sub>8</sub> x 47<sup>1</sup>/<sub>4</sub> in  
(175 x 29 x 120 cm)

Photograph by Giorgio von Arb  
and Andreas Camenzind



**Suspension IV, 1995**

Ebony and stainless steel  
48<sup>7</sup>/<sub>8</sub> x 8<sup>5</sup>/<sub>8</sub> in  
(124 x 22 cm)

Photograph by  
Laurent Sully Jaulmer



**SANTIAGO CALATRAVA: SCULPTURE INTO ARCHITECTURE**  
**The Metropolitan Museum of Art, October 18, 2005–March 5, 2006**

**Musical Star, 2005**

White marble, chrome-plated steel, wire  
59 x 11<sup>3</sup>/<sub>4</sub> in  
(150 x 30 cm)

Shown here, original version from 1999; photograph by Giorgio von Arb and Andreas Camenzind



**Turning Torso, 2005**

Thassos marble, chrome-plated steel, wire  
55<sup>1</sup>/<sub>8</sub> x 9<sup>7</sup>/<sub>8</sub> x 40<sup>1</sup>/<sub>8</sub> in  
(140 x 25 x 102 cm)

Shown here, original version from 1991; photograph by Heinrich Helfenstein



**“Turning Torso”  
Apartment Tower,  
Malmö, Sweden,  
1999–2005**

Model

Photograph by  
Heinrich Helfenstein



**SANTIAGO CALATRAVA: SCULPTURE INTO ARCHITECTURE**  
**The Metropolitan Museum of Art, October 18, 2005–March 5, 2006**

**80 South Street  
Tower**, New York,  
New York, U.S.A.,  
2000–  
Model

Photograph by  
Heinrich Helfenstein



**Climbing Torso**, 1990  
Thassos marble,  
chrome-plated steel  
16 1/8 x 9 7/8 x 45 5/8 in  
(41 x 25 x 116 cm)

Photograph by Giorgio von Arb  
and Andreas Camenzind



**Bird I**, 1986  
Gold-plated brass,  
black granite  
34 5/8 x 24 3/8 x 18 1/2 in  
(88 x 62 x 47 cm)

Photograph by Giorgio von Arb  
and Andreas Camenzind





**SANTIAGO CALATRAVA: SCULPTURE INTO ARCHITECTURE**  
**The Metropolitan Museum of Art, October 18, 2005–March 5, 2006**

**Lyons Airport Railway Station, Lyon, France, 1989–1994**

Model

Photograph of the completed project by Paolo Rosselli



**Tenerife Concert Hall, Tenerife, Canary Islands, Spain, 1991–2003**

Model

Photograph of the completed project by Alan Karchmer



**Springing Leaf, 1987**

Black granite,  
gold-plated brass  
74<sup>3</sup>/<sub>4</sub> x 23<sup>5</sup>/<sub>8</sub> x 11 in  
(190 x 60 x 28 cm)

Photograph by  
Laurent Sully Jaulmer





**SANTIAGO CALATRAVA: SCULPTURE INTO ARCHITECTURE**  
**The Metropolitan Museum of Art, October 18, 2005–March 5, 2006**

**Bird II, 1995**

Wood, chrome-plated  
steel, wire

46 1/2 x 11 x 29 1/2 in  
(118 x 28 x 75 cm)

Photograph by Giorgio von Arb  
and Andreas Camenzind



**Girouette  
(Singing Bird), 1990**

Gold-plated brass,  
black granite

19 5/8 x 19 5/8 x 57 1/8 in  
(50 x 50 x 145 cm)

Photograph by Giorgio von Arb  
and Andreas Camenzind



**Mother and Child, 1990**

Gold-plated brass,  
black granite

41 3/8 x 41 3/8 x 29 1/2 in  
(105 x 105 x 75 cm)

Photograph by Giorgio von Arb  
and Andreas Camenzind



**SANTIAGO CALATRAVA: SCULPTURE INTO ARCHITECTURE**  
**The Metropolitan Museum of Art, October 18, 2005–March 5, 2006**

**Milwaukee Art  
Museum,** Milwaukee,  
Wisconsin, U.S.A.,  
1994–2001

Model

Photograph of the completed  
project by Alan Karchmer



**World Trade Center  
Transportation Hub,**  
New York, New York,  
U.S.A., 2003–

Model

Photograph, Calatrava Archive



**Ernsting Warehouse,**  
Coesfeld-Lette,  
Germany, 1983–1985

Model

Photograph of the completed  
project by Oliver Schuh and  
Barbara Burg



**SANTIAGO CALATRAVA: SCULPTURE INTO ARCHITECTURE**  
**The Metropolitan Museum of Art, October 18, 2005–March 5, 2006**

**Wall, 2005**

Wood

64<sup>5</sup>/<sub>8</sub> x 17<sup>3</sup>/<sub>8</sub> x 25<sup>1</sup>/<sub>4</sub> in  
(164 x 44 x 64 cm)

Shown here, original version  
from 1993; photograph by  
Heinrich Helfenstein



**Waves, 1994**

Bronze rods, steel

17<sup>3</sup>/<sub>4</sub> in x 10 ft 5<sup>1</sup>/<sub>2</sub> in x  
78<sup>3</sup>/<sub>4</sub> in  
(45 x 319 x 200 cm)

Photograph, Calatrava Archive



**La Rioja Bodegas**

**Ysios Winery,**

La Guardia, Spain,  
1998–2001

Model

Photograph of the completed  
project by Roland Halbe



**SANTIAGO CALATRAVA: SCULPTURE INTO ARCHITECTURE**  
**The Metropolitan Museum of Art, October 18, 2005–March 5, 2006**

**Master Plan for the  
2004 Olympic and  
Paralympic Games,**

Athens, Greece,  
2001–2004

Model

Photograph of the completed  
project by Oliver Schuh and  
Barbara Burg



**City of Arts and  
Sciences, Valencia,**

Spain, 1991–1996

Model

Photograph of the completed  
project by Oliver Schuh and  
Barbara Burg



**Eye, 1994**

Black sienite granite,  
wire, oak

68 7/8 x 55 7/8 x 7 7/8 in  
(175 x 142 x 20 cm)

Photograph by Giorgio von Arb  
and Andreas Camenzind



**SANTIAGO CALATRAVA: SCULPTURE INTO ARCHITECTURE**  
**The Metropolitan Museum of Art, October 18, 2005–March 5, 2006**

**The New York Times  
Capsule, 1996**

Maquette

Black granite

47 1/4 x 47 1/4 x 35 3/8 in  
(120 x 120 x 90 cm)

Photograph by

Heinrich Helfenstein



**Untitled, 2000**

Black sienite granite

26 3/8 in x 19 5/8 in x  
9 ft 9 in

(67 x 50 x 300 cm)

Photograph by

Heinrich Helfenstein



**Fruit, 1999**

Black sienite granite

70 7/8 x 15 3/4 x 15 3/4 in  
(180 x 40 x 40 cm)

Photograph by

Heinrich Helfenstein



**SANTIAGO CALATRAVA: SCULPTURE INTO ARCHITECTURE**  
**The Metropolitan Museum of Art, October 18, 2005–March 5, 2006**

**Flower, 1999**

Carrara marble, granite  
19<sup>3</sup>/<sub>4</sub> x 19<sup>3</sup>/<sub>4</sub> x 23<sup>5</sup>/<sub>8</sub> in  
(50 x 50 x 60 cm)

Photograph by  
Heinrich Helfenstein



**Cycladic Stones, 2005**

Carrara marble  
Largest:  
22 x 22 x 30<sup>3</sup>/<sub>4</sub> in  
(56 x 56 x 78 cm)

Shown here, a preliminary  
stage; photograph by  
Leonardo Bezzola



**Eros, 1999**

White alabaster  
16<sup>1</sup>/<sub>2</sub> x 11 x 5<sup>1</sup>/<sub>8</sub> in  
(42 x 28 x 13 cm)

Photograph by Giorgio von Arb  
and Andreas Camenzind

